

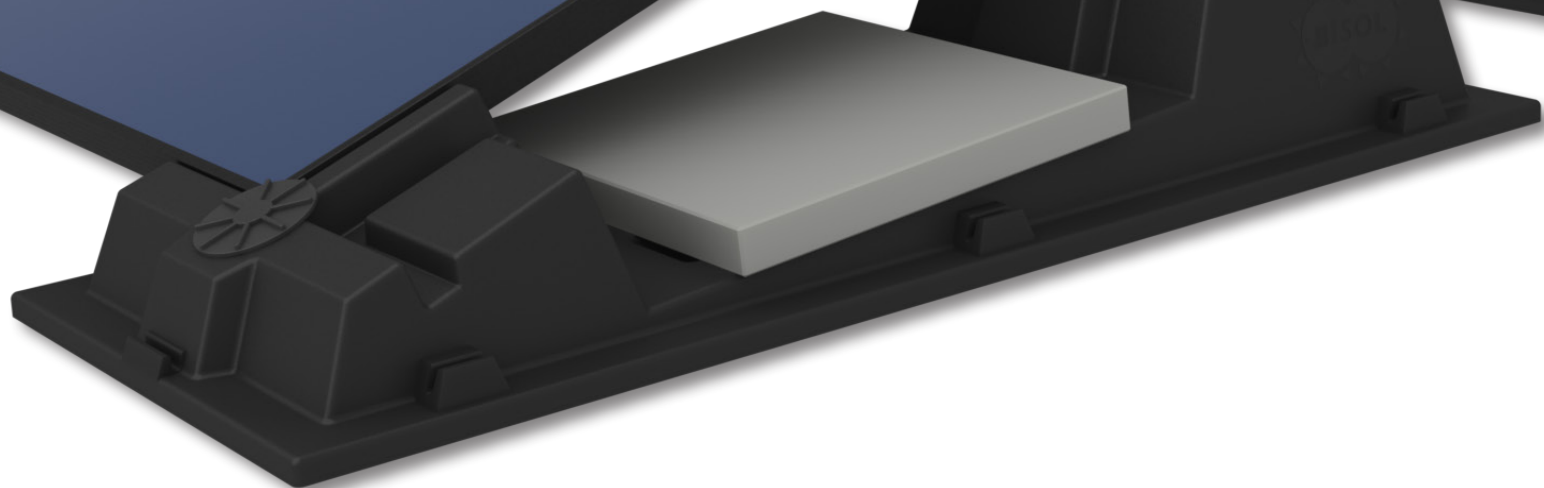
BISOL EasyMount HDPE Base 200

Quick and easy mounting solution for flat roofs



Solar company!

BISOL EasyMount HDPE base 200 is a premium mounting solution for PV installations on flat roofs or surfaces. It requires no roof penetration and allows for the PV modules to be positioned at a 20° angle. The cutting edge mounting solution has been developed in-house and combines superior design with durability for extreme ease of installation and long-term performance. BISOL EasyMount HDPE base 200 is made of highest quality recyclable materials and will leave a positive mark on the environment.

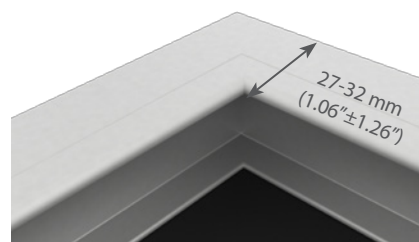


Technical Specifications

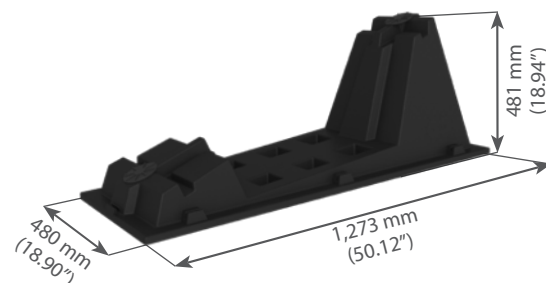
| | |
|-------------------------------------|--|
| Application | Flat roofs |
| Roof incline | Up to 5° |
| Method of installation | No roof penetration |
| Module angle | 20° |
| Module orientation | Landscape |
| Module frame tolerances | Length: any / Width: 991 mm ± 5 mm (39.02" ± 0.2") / Thickness: 40 mm ± 2 mm (1.575" ± 0.08") / Reverse side width: 27 - 32 mm (1.06" - 1.26") |
| Base color | Carbon black |
| Base material | High-density polyethylene - HDPE, carbon black, UV-resistant (base) / Glass fibre reinforced polypropylene (screws) |
| Base weight | 5.5 kg (12.1 lbs) |
| Additional stabilization | Ballast, Wind shields |
| Temperature range | -20 to 70°C |
| Snow load per system | 0 - 2.40 kN/m ² |
| Wind load (velocity) ⁽¹⁾ | 0 - 115 km/h (71 mph) |

⁽¹⁾ With the use of ballast and wind shields according to the specifications.

Frame width on the reverse side of the module
(designed specially for BISOL modules):



Dimensions of HDPE Base 200:



8x faster installation



Lightweight and stackable



No tools required



15-year UV and mechanical resistance guarantee



Efficient cooling



Low installation cost

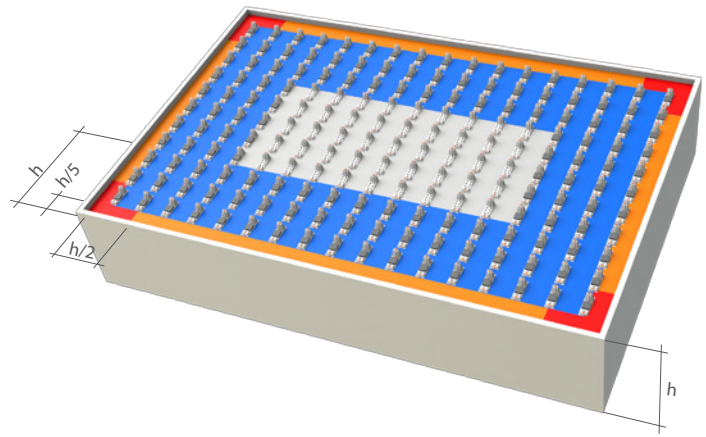
Additional stabilization requirements for different wind velocities

Basic wind velocity: 20 m/s (45 mph)

| building height | Ballast | | | | Ballast & wind shields | | | |
|-----------------|---------|---------|---------|---------|------------------------|---------|---------|---------|
| | F | G | H | I | F | G | H | I |
| kg/base | kg/base | kg/base | kg/base | kg/base | kg/base | kg/base | kg/base | kg/base |
| h ≤ 7m | 60 | 27 | 27 | 27 | 60 | 27 | 27 | 14 |
| h ≤ 8m | 60 | 40 | 27 | 27 | 60 | 40 | 27 | 14 |
| h ≤ 9m | (x) | 40 | 40 | 27 | (x) | 40 | 27 | 14 |
| h ≤ 10m | (x) | 40 | 40 | 27 | (x) | 40 | 27 | 27 |
| h ≤ 12m | (x) | 60 | 40 | 27 | (x) | 60 | 27 | 27 |

Basic wind velocity: 25 m/s (56 mph)

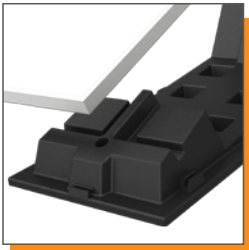
| building height | Ballast | | | | Ballast & wind shields | | | |
|-----------------|---------|---------|---------|---------|------------------------|---------|---------|---------|
| | F | G | H | I | F | G | H | I |
| kg/base | kg/base | kg/base | kg/base | kg/base | kg/base | kg/base | kg/base | kg/base |
| h ≤ 8m | (x) | 60 | 60 | 30 | (x) | 60 | 30 | 30 |
| h ≤ 9m | (x) | (x) | 60 | 30 | (x) | (x) | 60 | 30 |
| h ≤ 12m | (x) | (x) | 60 | 60 | (x) | (x) | 60 | 60 |



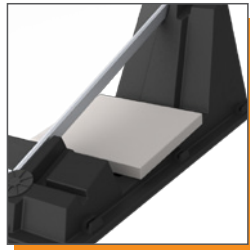
Wind loads calculated in accordance with Eurocode 1 (EN 1991-1-4). Information for additional wind zones available upon request.

(x) The use of HDPE bases 200 is not recommended.

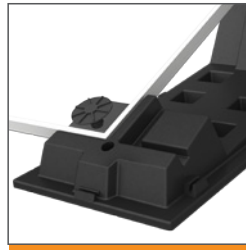
System Components



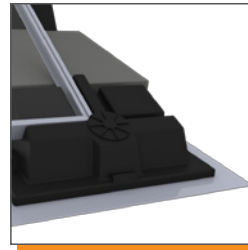
The PV module is placed between two HDPE bases 200 into specially prepared grooves.



Extra ballast can be placed at the bottom of the HDPE base 200.



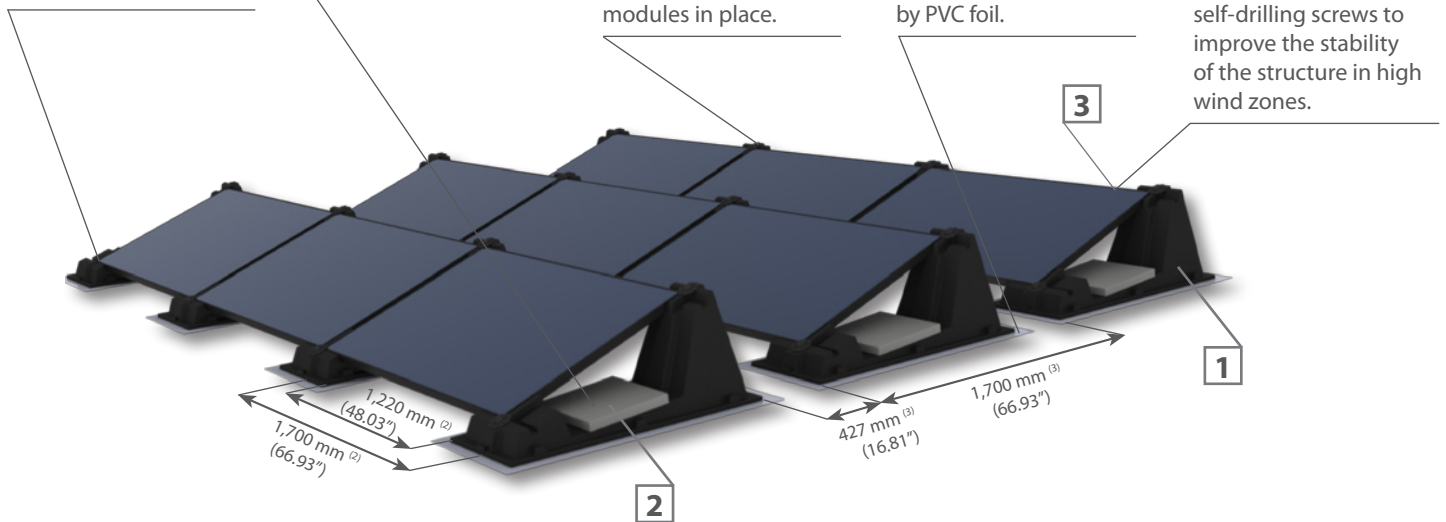
The polypropylene screws are inserted in specially prepared holes and fixed to lock the PV modules in place.



For extra protection an additional layer of the same material can be used on surfaces covered by PVC foil.



The metal wind shields can be attached on the reverse side of the HDPE base 200 by using self-drilling screws to improve the stability of the structure in high wind zones.



| Component | ID Code | Component description |
|-----------|-----------------|--------------------------------------|
| 1 | SEKP-EMPB200_BK | EasyMount HDPE 200 Base Basic Kit |
| 2 | SEK-LOAD_CP15 | Load Concrete plate 40/40/4cm (15kg) |

| Component | ID Code | Component description |
|-----------|------------------|---|
| 3 | SEK-EMPB_200_TWS | Trapezoidal Wind Shield HDPE 200 (anthracite / black) |
| 4 | SEK-JA3_65_25 | Screw self-tapping 6,5 x 25 mm JA3 |

(2) Dimensions specific for use with BISOL modules.

(3) Layout example for optimal yield-to-installed power ratio in Central Europe.